
CAD4U-Insulation



Insulation-Makro for CAD4U/CAMOD

Neither the whole nor any part of the information contained in, or the product described in, this manual may be adapted or reproduced in any material form except with the prior written approval of C-TECHNIK Software GmbH, Im Vogelsang 9, D-74861 Neudenaun.

The product described in this manual is subject to continuous development and improvement. All information of a technical nature and particulars of the product and its use (including the information and particulars in this manual) is given by C-TECHNIK Software GmbH in good faith. C-TECHNIK Software GmbH welcomes comments and suggestions relating to the product and this manual.

This manual is intended only to assist the reader in the use of the product and therefore C-TECHNIK Software GmbH shall not be liable for any loss or damage whatsoever arising from the use of information or particulars in, or any error or omission in, this manual, or any incorrect use of the product.

Copyright © C-TECHNIK Software GmbH - Germany 2000

Trademarks

Microsoft®, Windows® and IntelliMouse® are trademarks of Microsoft Corp.

Adobe® Acrobat® is a registered trademark of Adobe Systems Incorp.

CAD4U® and RoboCAD® are registered trademarks of C-TECHNIK Software GmbH - Germany.

All rights reserved!

Version: August 2001

© C-TECHNIK Software GmbH
Siglingen
Im Vogelsang 9
D-74861 Neudenaun
Tel. +49-6298-9365-30
Fax +49-6298-9365-42
Email: info@c-technik.de
Internet: www.c-technik.de

Contents

CAD4U-Insulation	4
INTRODUCTION	4
CAD4U-INSULATION	4
COPY INDEX.....	4
Warnings	7
INSULATION	8
Examples.....	9

CAD4U-Insulation

INTRODUCTION

Before installing an Extra-Program, CAD4U should be installed on your system and you should also know the path in which CAD4U/CAMOD is installed.

Step-by-step procedure:

1) Installing CAD4U-INSULATION

2) Copying the index 62347 into your library

(You don't have to copy the index, if you have already installed the ARCHITECTURE- or HOLZTECHNIK-Modul)

You can find the program and files required for an installation on the CAD4U-CD.

After the installation you can start the function by choosing DRAW / ISO from the menu.

CAD4U-INSULATION

For installing CAD4U-INSULATION please start the installation program (SETUP) with a double-click and follow the instructions on the screen. You can find the program in the folder EXTRAS/CAD4U-INSULATION on the CD.

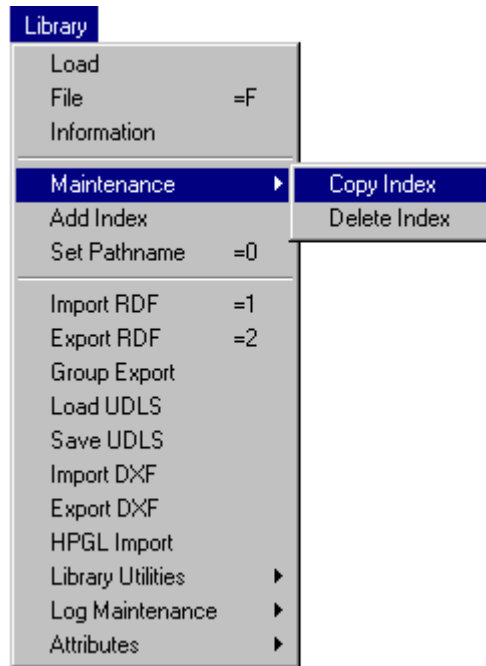
COPY INDEX

Copy Index

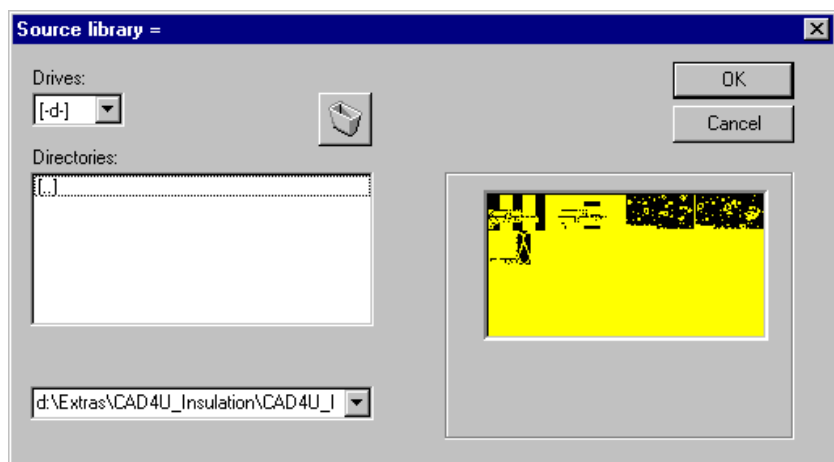
CAD4U-INSULATION uses a special insert for hatching areas with an Insulation-Hatch. This insert is filed on the Index 62347. You find this Index in the folder EXTRAS / CAD4U-INSULATION / CAD4U_INSULATION_LIB on the CAD4U CD-ROM.

You can skip this chapter, if you have already installed the ARCHITECTURE- or HOLZTECHNIK-Modul, because the Index 62347 is included in these Moduls.

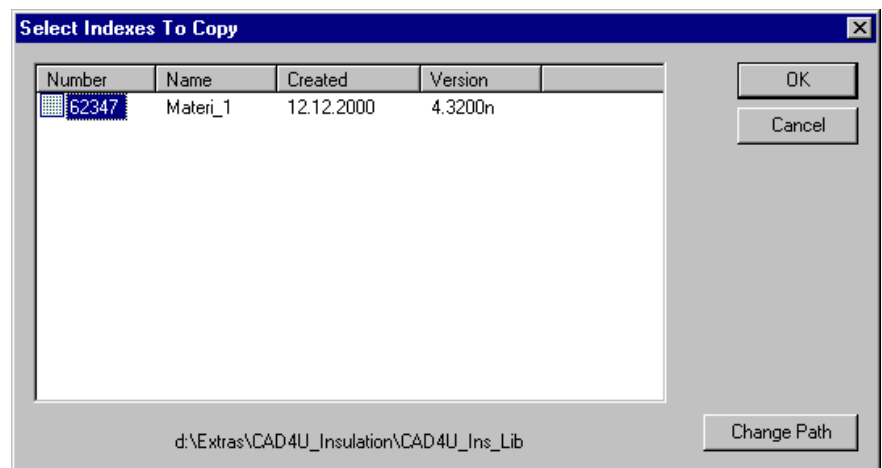
To copy the Index into your own library, start CAD4U/CAMOD and choose LIBRARY/COPY INDEX from the menu.



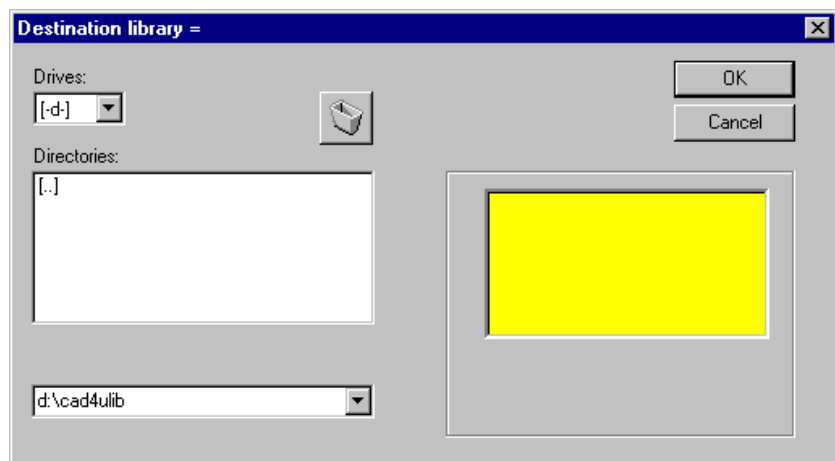
Choose the **Source library**.
 (CAD4U_INS_LIB on the CAD4U CD-ROM!)



Select the Index page you want to copy (here Index 62347).



Choose the **Destination library** (e.g. your own library).



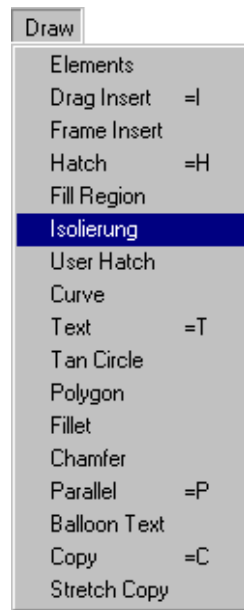
Warnings

The CAD4U(-XS) library system is complex and powerful. It uses a structured system of files and directories to hold drawings using less disk space than would be required if the drawings were stored as simple files, and to provide graphic Indexes for drawing selection.

Used correctly, it is a great aid to drawing and drawing management; with sufficient carelessness, it can destroy your drawings.

Don't try to copy or modify libraries using DOS commands or file-management programs (e.g. WINDOWS EXPLORER).

The program is now installed on your system. You can start it by clicking onto DRAW / INSULATION in the menu.



INSULATION

How to start

Start the function (DRAW / INSULATION from the menu) and select the 4 points of the plane you want to hatch.

Important: (bei nicht quadratischen Flächen)

a) start on the lower side

b) the points 1, 2 and 4 should form a right angle

After you have selected the last point, the plane will be hatched.

If you want to escape the function press the ESC-key on your keyboard and click the right mouse button to display the element palette on the screen again.

Examples

